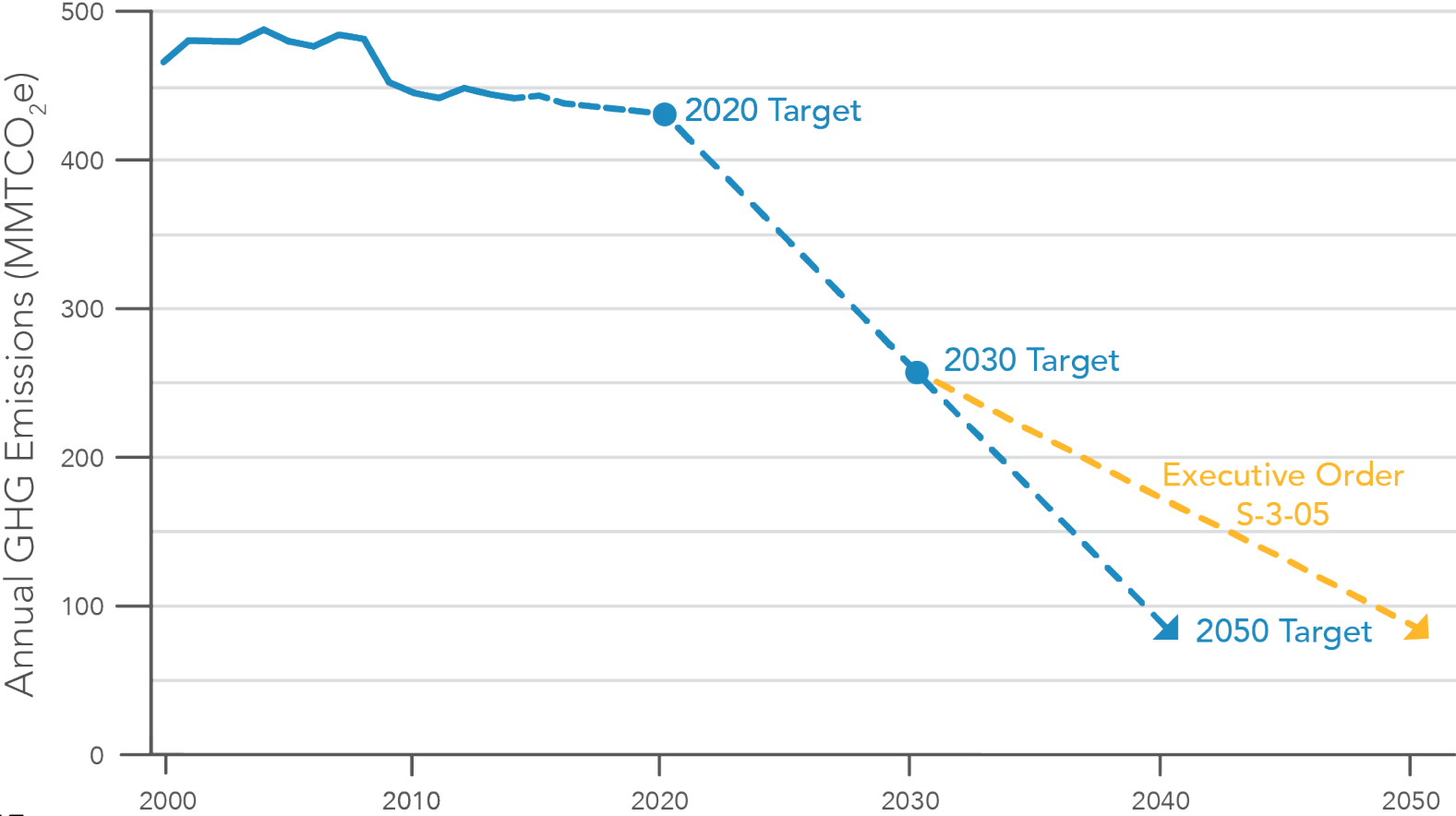


# Implementing California's Climate Policies

---



# California GHG Emissions Reduction Targets



Source: CARB, 2017

# 2017 Scoping Plan Portfolio

---



Double building efficiency



Cleaner freight and goods movement



50% renewable power \*\*



Slash potent “super-pollutants” from dairies, landfills and refrigerants



More clean, renewable fuels



Cap emissions from transportation, industry, natural gas, and electricity



Cleaner zero or near-zero emission cars, trucks, and buses



Invest in communities to reduce emissions



Walkable/bikeable communities with transit



Protect and manage natural and working lands

\*\*In 2018, SB 100 increased the Renewables Portfolio Standard to 60% by 2030

# Scoping Plan: Implementation is Critical

---

***To achieve the GHG targets and air quality co-benefits, we must invest the resources and remain committed to ensuring the Scoping Plan policies are successfully implemented***

- 100% compliance in the Cap & Trade and the Low Carbon Fuel Standard (LCFS) programs in 2019
- LCFS incentivized displacement of over 2.5 billion gallons of petroleum fuel in 2019
- Large investor-owned utilities are over-complying with the Renewables Portfolio Standard
- Funding continues to support complementary policies/efforts to reduce GHG emissions and provide public health benefits for transportation, agriculture, waste, natural resources, and other areas

# Lessons Learned

---

Thoughtfully designed programs have pushed clean technology and fuels

Revenues from carbon pricing continue to be important for addressing environmental justice and equity concerns

Exportable programs are necessary to address global emissions

Retirement and public funds (i.e. economic recovery and stimulus packages) need to be leveraged to support a sustainable future

Reductions in fossil transportation fuels and VMT remain a challenge. Current situation may provide data on how to implement existing programs

# *Transportation Sector:* New Paradigm Necessary

---

Aggressive strategies needed to meet health-based air quality standards, SB 32 GHG requirements, and *carbon neutrality in 2045*

By 2045: Goal is zero-emission transportation sector through transformative action

ZEVs, coupled with infrastructure that increases climate resiliency

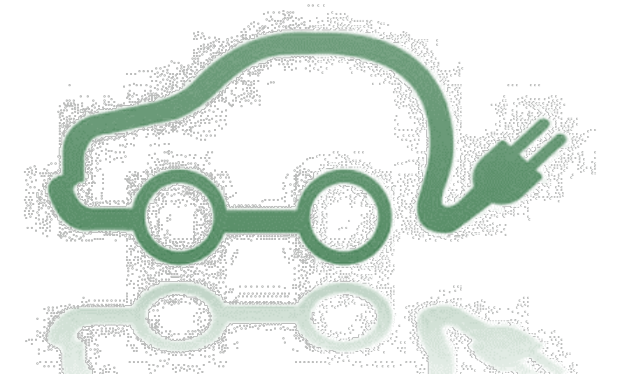
Sustainable communities that improve travel choices and reduce VMT

# Transportation Sector: Pathway to Reducing Emissions

---

## Widespread Electrification and Zero-Emission Vehicles

- By 2035: 100% new car sales are ZEVs; All school buses, marine port & airport equipment are ZEVs. 100% ZEV drayage trucks
- By 2045: 100% Medium and Heavy-Duty ZEVs in operation



## Increased Transportation Options to Reduce VMT

- By 2035: Reduce vehicle miles traveled per capita
- By 2045: High-quality, efficient travel options for all Californians

# Short Lived Climate Pollutant Reductions for 2030

---

- In 2017, CARB approved and began implementing the comprehensive SLCP Reduction Strategy to reduce statewide emissions to below 2013 levels by 2030 for:
  - methane by 40 percent
  - hydrofluorocarbon gases by 40 percent, and
  - anthropogenic black carbon by 50 percent

Landfills

Dairy and Livestock

Refrigerants



# Natural and Working Lands: Opportunity to Complement Mitigation and Reduce Emissions

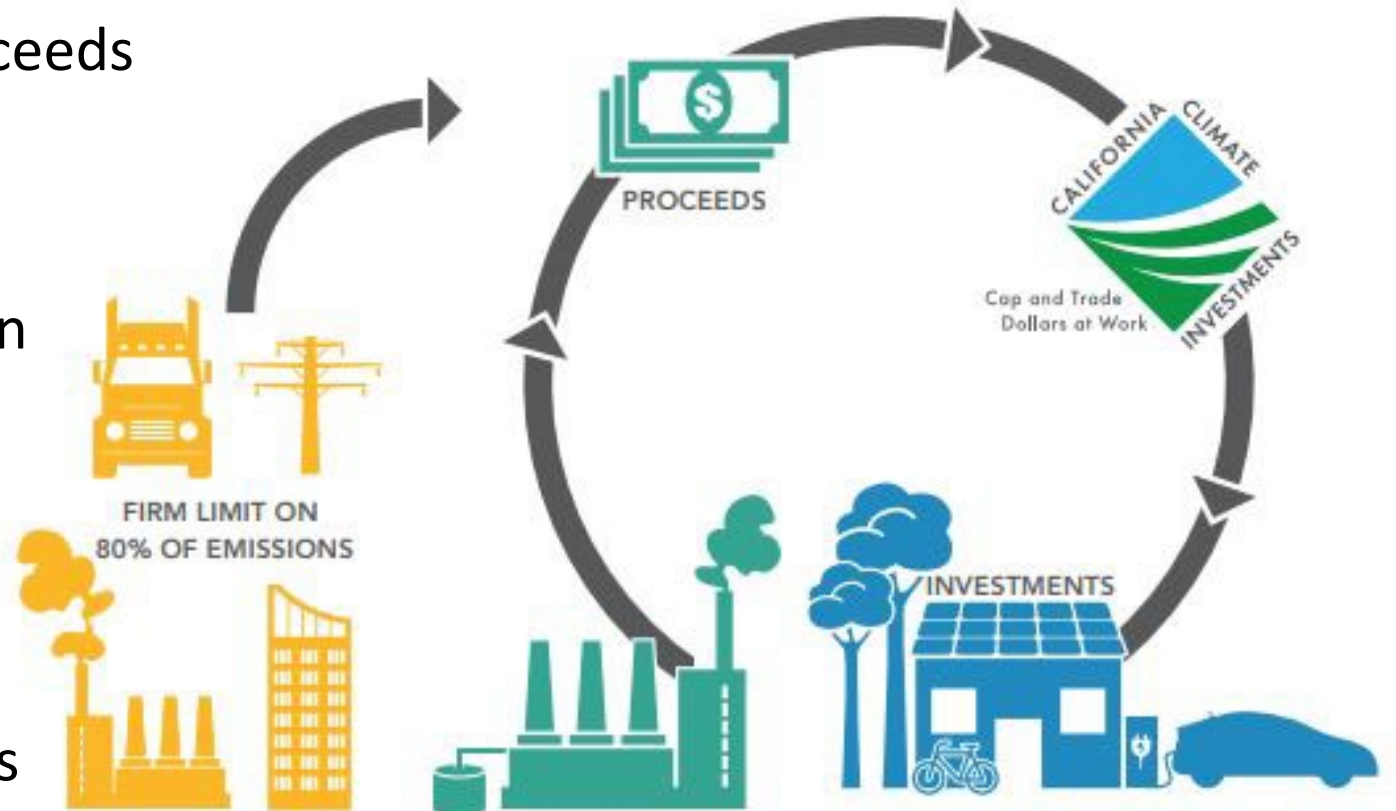
---

Emit greenhouse gases, must be managed to emit less and store more carbon over time



# California Climate Investments using Cap-and-Trade Auction Proceeds

- \$16.9B in Cap-and-Trade auction proceeds generated for investments.
- Funding directed to programs that:
  - Facilitate greenhouse gas emission reductions
  - Invest in priority populations: disadvantaged and low-income communities
  - Provide other community benefits





# California Climate Investments

## SUSTAINABLE COMMUNITIES & CLEAN TRANSPORTATION



AFFORDABLE HOUSING



WALKABLE + BIKEABLE STREETS



CLEAN CARS



PUBLIC TRANSIT

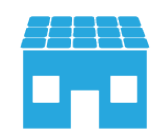


TRUCKS



HIGH SPEED RAIL

## ENERGY EFFICIENCY, NATURAL RESOURCES & WASTE



ENERGY EFFICIENT HOMES WITH SOLAR PANELS



TREE PLANTING

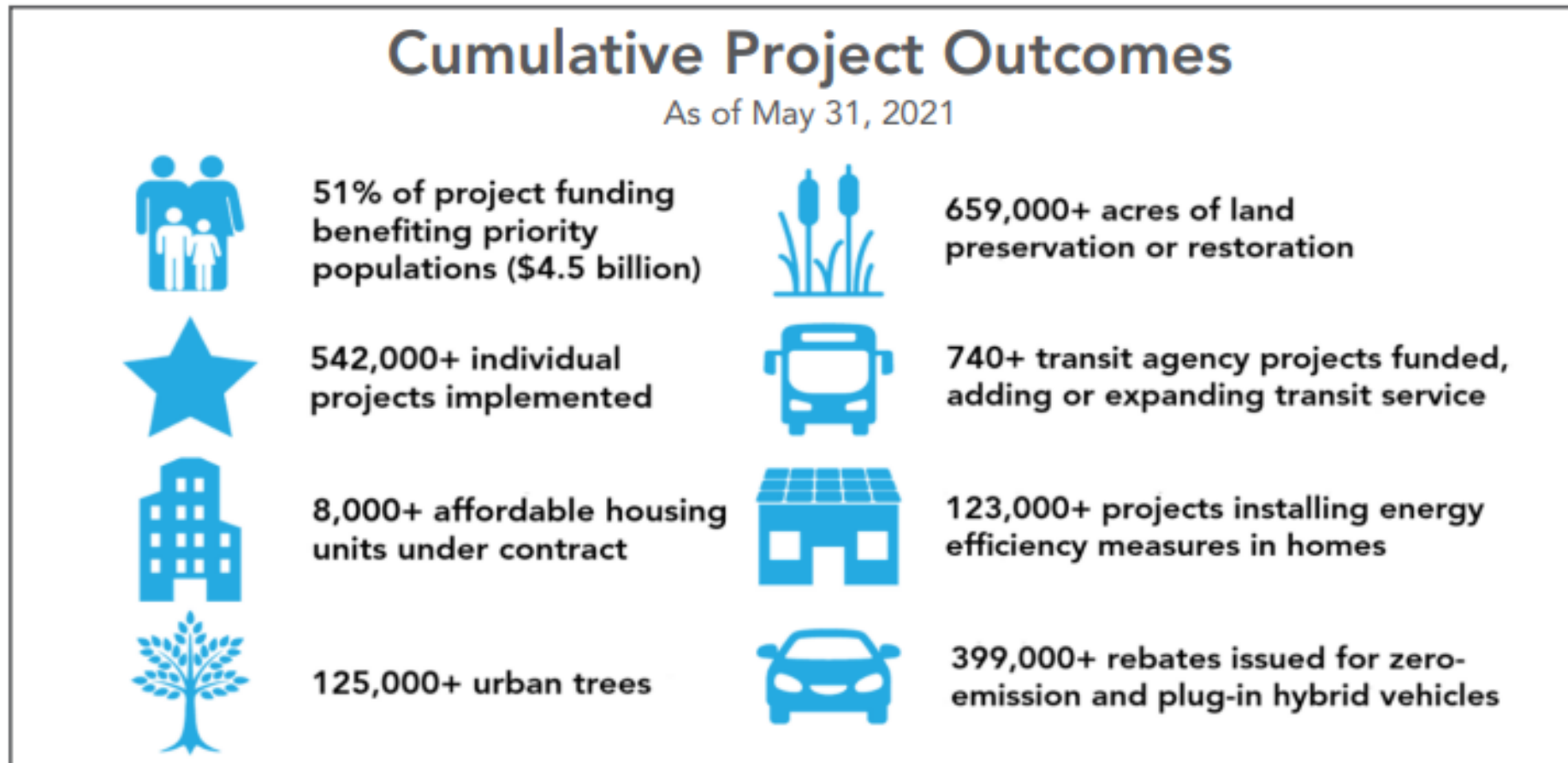


COMPOSTING



WATERSHED & WETLANDS RESTORATION

# Investment Outcomes – Some Examples



# THANK YOU

